



BIM TOOLS



BIM USER MANUAL EFAPEL ADD-IN

September 2024
Version 02

CONTENT

DOCUMENT VERSIONS.....	3
BIM USER MANUAL.....	4
01. Introduction.....	4
02. Add-In Description.....	4
03. Compatible Versions	4
04. Add-In Usage.....	4
05. Object Properties.....	7
06. Objects Quantification	7
07. Final Considerations	7

DOCUMENT VERSIONS

V.00	06/12/2019	First published version.
V.01	30/09/2021	Add-in new published version: <ul style="list-style-type: none">• Update of the Logus90 and Apolo5000 series;• Added to the Add-in the series Siza, Quadra, Latina European Matrix and Latina Italian Matrix.
V.02	30/09/2024	Add-in new published version: <ul style="list-style-type: none">• Update of the Logus90, Apolo 5000, Siza, Quadra, Latina Matriz Europeia and Latina Matriz Italiana series;• Added to the Add-in the series: Burótica, Waterproof 48.

BIM USER MANUAL

01. Introduction

This Manual aims to support the share and use of BIM Objects related to products developed and marketed by **EFAPEL** using an Autodesk Revit® Add-In, seeking to help AEC Industry - Architecture, Engineering and Construction technicians, in their decision-making process.

02. Add-In Description

The Add-In was developed for Autodesk Revit® and helps the configuration and application of the equipment marketed by EFAPEL related to the followed series:

- LOGUS 90
- APOLO 5000
- SIZA
- QUADRA
- LATINA EUROPEAN MATRIX
- LATINA ITALIAN MATRIX
- BURÓTICA
- WATERPROOF

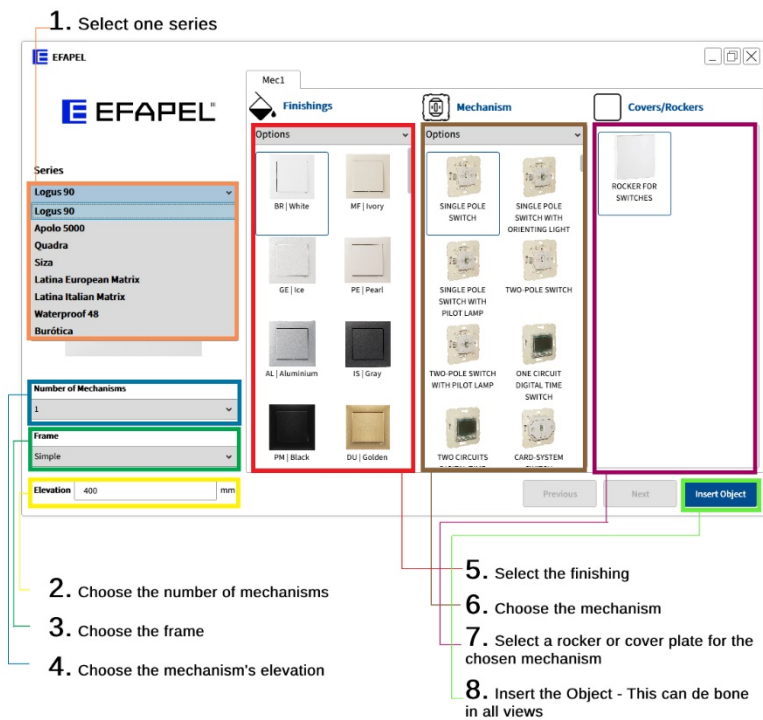
03. Compatible Versions

The Add-In is compatible with the Autodesk Revit 2021®, 2022®, 2023®, 2024® and 2025® versions.

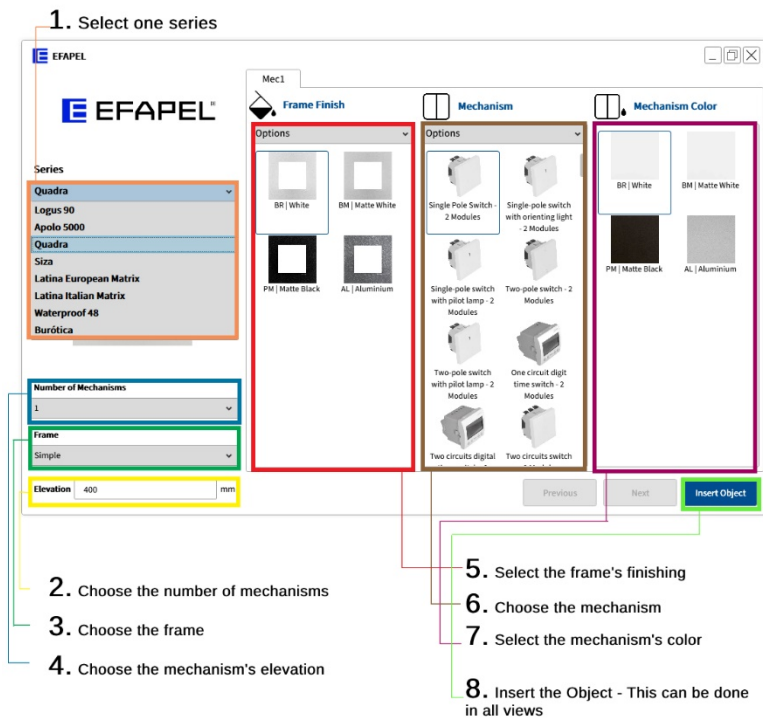
04. Add-In Usage

Configuration of an EFAPEL object after the Add-In installation:

- Series: Logus 90 and Apolo 5000 (Mec 21):



- Series: Siza, Quadra, Latina European Matrix and Latina Italian Matrix (Mec Q45):



- Series Waterproof 48:

1. Select Waterproof 48 series

2. Choose the number of mechanisms

3. Choose the mechanism

4. Select the mechanism's color

5. Insert the Object - This can be done in all views

- Series Burotica:

1. Select Burótica series

2. Select the range of products

3. Choose the number of mechanisms

4. Choose mechanism's elevation (not applied to Floor Boxes)

5. Select the Floor Box's / Workstation's finishing

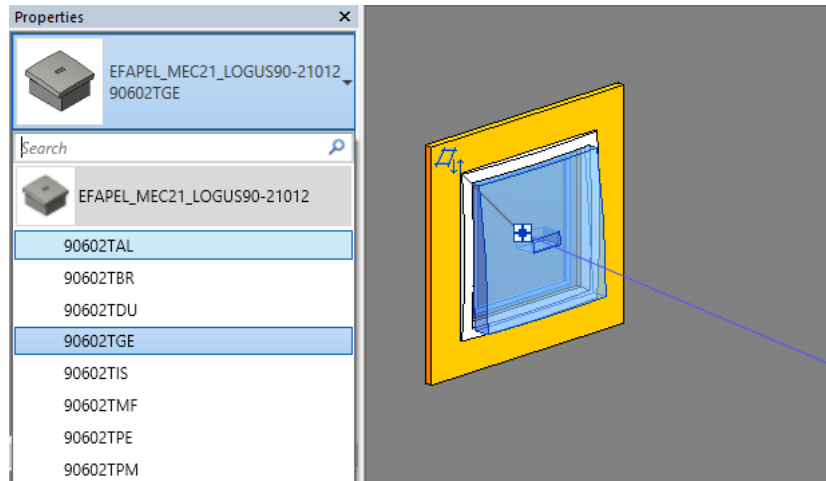
6. Choose the mechanism

7. Select the mechanism's color

8. Insert the Object - This can be done in all views

Note: The latest definition will remain saved in the Add-in. After inserting the object, it's possible to choose other existing finishings from the selected series.

When selecting the frame or the rocker/cover plate, in the properties panel will appear all the available finishings.



05. Object Properties

All Objects have information regarding the manufacturer and related to the characteristics of the applied products. Additional information can be found in [EFAPEL](#) website.

Objects are also classified according to the most commonly used international classification systems in the AEC industry.

06. Objects Quantification

All objects can be easily quantified, using the Quantity Schedules inside the Autodesk Revit, configured for that purpose.

Together with the Add-In is attached a project template file with pre-configured schedules, divided by language, for quantifying EFAPEL equipment.

07. Final Considerations

Future revisions to the current version of the Add-In will be made available on the [EFAPEL](#) website.

EFAPEL reserves the right to amend this document or the products contained in it without notice. If in doubt, please contact EFAPEL.